

82.5 mg product (crude, 17.1 g total)
 20.1 mg standard (dimethyl fumarate, 99.0% purity)
 PROTON CDC13

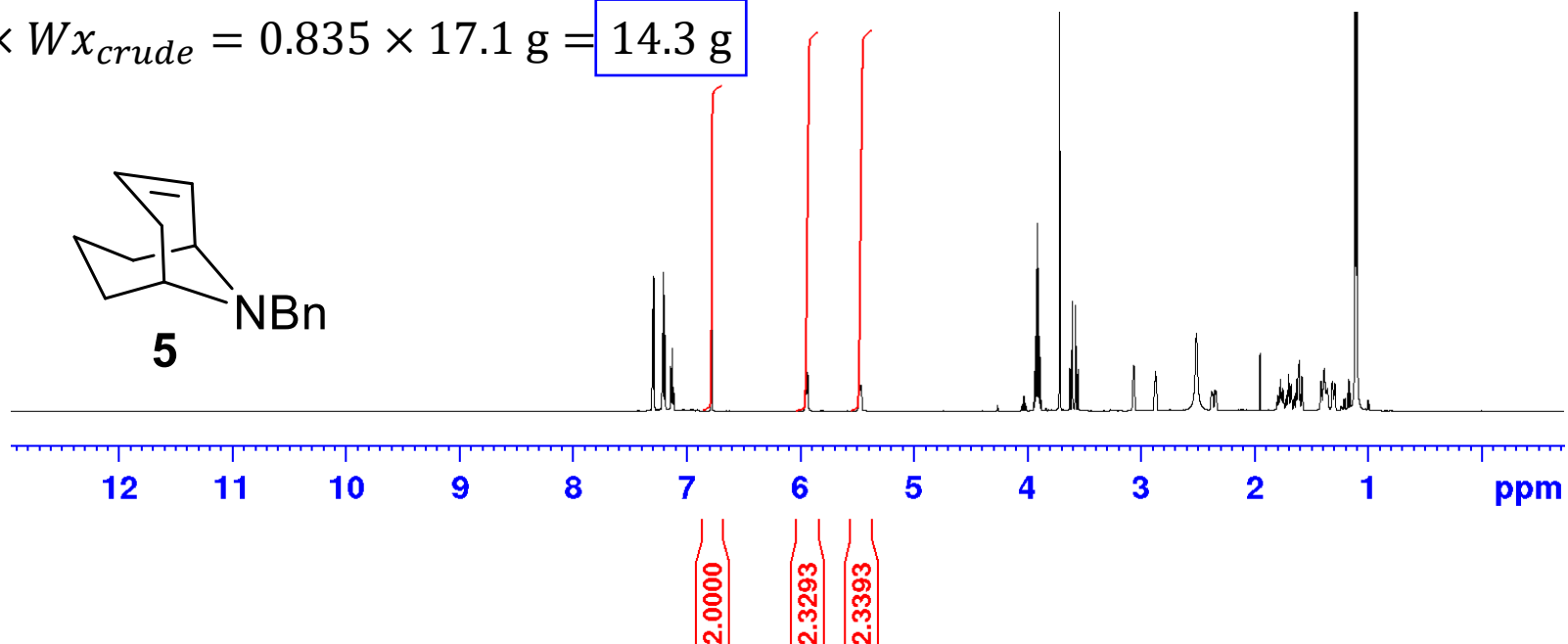
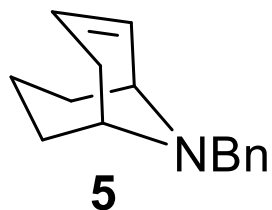


F2 - Acquisition Parameters
 Date_ 20220215
 Time 9.44 h
 INSTRUM spect
 PROBHD Z148658_0003 {
 PULPROG zg30
 TD 65536
 SOLVENT CDC13
 NS 24
 DS 2
 SWH 12019.230 Hz
 FIDRES 0.366798 Hz
 AQ 2.7262976 sec
 RG 15.88
 DW 41.600 usec
 DE 10.33 usec
 TE 296.6 K
 D1 8.00000000 sec
 TD0 1
 SFO1 600.0087050 MHz
 NUC1 1H
 P0 5.17 usec
 P1 15.50 usec
 PLW1 13.23200035 W

$$Px = \frac{Ix}{Ical} \times \frac{Ncal}{Nx} \times \frac{Mx}{Mcal} \times \frac{Wcal}{Wx} \times Pcal$$

$$Px = \frac{2.3293}{2.0000} \times \frac{2}{1} \times \frac{213.32 \text{ gmol}^{-1}}{144.13 \text{ gmol}^{-1}} \times \frac{20.1 \text{ mg}}{82.5 \text{ mg}} \times 0.990 = 83.5\%$$

$$Wpdt = Px \times Wx_{crude} = 0.835 \times 17.1 \text{ g} = 14.3 \text{ g}$$



F2 - Processing parameters
 SI 65536
 SF 600.0050435 MHz
 WDW EM
 SSB 0
 LB 0.30 Hz
 GB 0
 PC 1.00